

Product description:

Dual disc check valve used for closing or setting networks of waste, cold and hot water.

Working temperature from -10 °C to +80 °C

Standards:

- Designed according to EN1074-3
- Face to face length: DIN3202 K1/ EN558-1 Series 16
- Flanges connection according to EN1092-2

Pressure tests:

All valves are individually hydrostatically tested according to BS EN12266-1

- Seal: 1,1 x PN (in bar)
- Body: 1,5 x PN (in bar)

Corrosion protection:

- RAL 5005 epoxy powder painting
- Applied internally and externally with a minimum layer thickness of 250 µm

Approvals:

- Certificate PED 014/68/ UE No. 1282, risk category III/model H
- 3.1 Certificate

Characteristics:

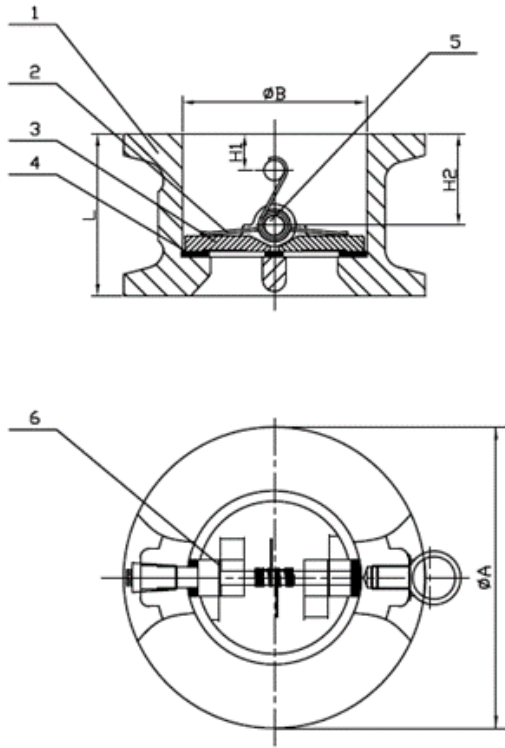
1. Dual disc check valves used for industrial warm and hot and hot water
2. GGG50 ductile iron body
3. Flap/disc GGG50, sealing with EPDM gasket
4. PN10/16 up to DN800



3.1



DN 40 - DN 800



No.	Parts	Materials
1	Body	GGG50
2	Spring	SS304
3	Disc	GGG50
4	Seal	EPDM
5	Hinge Pin	SS420
6	Gasket	PTFE

DN	L	PN10				PN16				Weight (kg)
		A	B	H1	H2	A	B	H1	H2	
40	43	92	57	7	19	92	57	7	19	1.4
50	43	107	65	7	19	107	65	7	19	1.5
65	46	127	80	6	20	127	80	6	20	2.2
80	64	142	94	8	28	142	94	8	28	3.3
100	64	162	117	9	27	162	117	9	27	5.2
125	70	192	145	9	30	192	145	9	30	7
150	76	218	170	10	31	217	170	10	31	8.2
200	89	273	224	10	33	272	224	10	33	16
250	114	328	265	20	50	328	265	20	50	24
300	114	378	310	13	43	383	310	13	43	40
350	127	438	360	13	45	443	360	13	45	55
400	140	489	410	15	52	495	410	15	52	70
500	152	594	505	18	58	617	505	18	58	85
600	178	700	624	21	73	734	624	21	73	153
700	229	810	720	28	98	820	720	28	98	240
800	241	915	825	30	100	930	825	30	100	353