

## Product description:

Ball check valve cu used for potable water and other neutral liquids

Working temperature from -10°C to 80°C

## Standards:

- Designed according to DIN3202 F6
- Flanges connection according to EN1092-2

## Pressure tests:

All valves are individually hydrostatically tested according to BS EN12266-1

- Seal: 1,1 x PN (in bar)
- Body: 1,5 x PN (in bar)

## Corrosion protection:

- RAL 5005 epoxy powder painting
- Applied internally and externally with a minimum layer thickness of 250 µm

## Approvals:

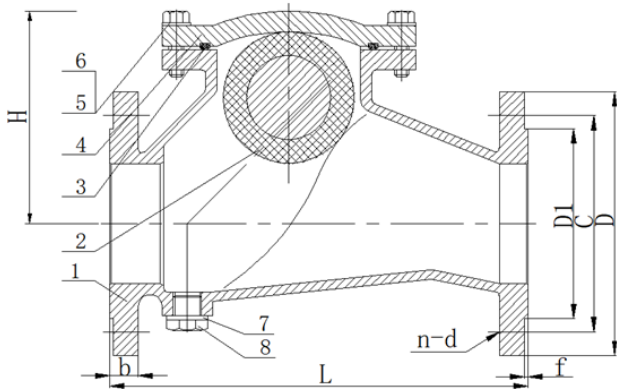
- Certificate PED 014/68/ UE No. 1282, category risk III/model H;
- Certificate EURFOINS ACS no.23 ACC NY 256 for use in contact with drinking water.

## Characteristics:

1. Resilient seated non return check valve.
2. Self-cleaning ball that moves freely in the body.
3. Complete erasure of the ball allowing full passage.
4. Mounting in horizontal or vertical ascending position
5. Plug for unclogging the ball under the body.

**3.1****CE**

## DN40-DN400



No.	Parts	Materials
1	Body	GGG50
2	Ball	Carbon Steel+EPDM for DN50-DN150 Ductile Iron+EPDM for DN200-DN400
3	O-Ring	NBR
4	Bonnet	GGG50
5	Bolt	Zincd Carbon Steel
6	Washer	Zincd Carbon Steel
7	Washer	PTFE
8	Plug	Zincd Carbon Steel

DN	L	φD	φC		D1	n-d		b	f	H	Weight(kg)
			PN10	PN16		PN10	PN16				
40	180	150	110	110	84	4-19	4-19	19	3	98	6.3
50	200	165	125	125	99	4-18	4-18	19	3	115	8.5
65	240	185	145	145	118	4-18	4-18	19	3	124	9.5
80	260	200	160	160	132	8-18	8-18	19	3	138	12
100	300	220	180	180	156	8-18	8-18	19	3	162	16
125	350	250	210	210	184	8-18	8-18	19	3	202	22
150	400	285	240	240	211	8-23	8-23	19	3	228	31
200	500	340	295	295	266	8-23	12-23	20	3	298	68
250	600	405	350	355	319	12-23	12-28	22	3	368	100
300	700	455	400	410	370	12-23	12-27	24.5	4	438	132
350	800	520	460	470	429	16-23	16-27	26.5	4	585	213
400	900	580	515	525	480	16-27	16-30	28	4	660	290